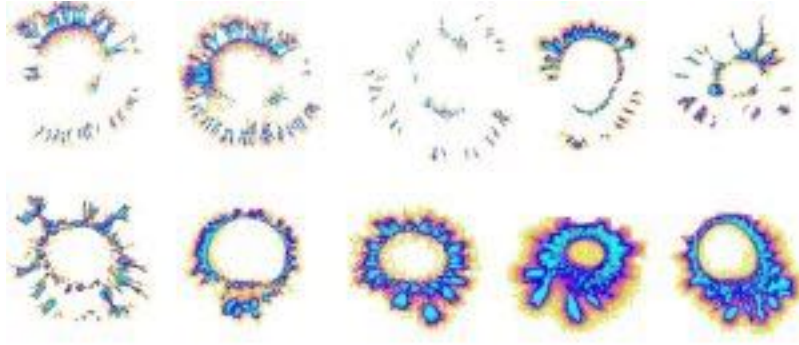


Human Light System - information transfer using electromagnetic waves (Light)

IUMAB Research project



Major Biological system:

Circulatory system: pumping and channeling blood to and from the body and lungs with heart, blood, and blood vessels.

Digestive System: digestion and processing food with salivary glands, esophagus, stomach, liver, gallbladder, pancreas, intestines, rectum, and anus.

Endocannabinoid system: neuromodulatory lipids and receptors involved in a variety of physiological processes including appetite, pain-sensation, mood, motor learning, synaptic plasticity, and memory.

Endocrine system: communication within the body using hormones made by endocrine glands such as the hypothalamus, pituitary or

pituitary gland, pineal body or pineal gland, thyroid, parathyroids, and adrenals or adrenal glands

Integumentary system: skin, hair and nails

Immune system: the system that fights off disease; composed of leukocytes, tonsils, adenoids, thymus, and spleen.

Lymphatic system: structures involved in the transfer of lymph between tissues and the blood stream, the lymph and the nodes and vessels that transport it.

Musculoskeletal system: muscles provide movement and a skeleton provides structural support and protection with bones, cartilage, ligaments, and tendons.

Nervous system: collecting, transferring and processing information with brain, spinal cord and nerves

Reproductive system: the sex organs; in the female; ovaries, fallopian tubes, uterus, vagina, mammary glands, and in the male; testicles, vas deferens, seminal vesicles, prostate, and penis.

Respiratory system: the organs used for breathing, the pharynx, larynx, trachea, bronchi, lungs, and diaphragm.

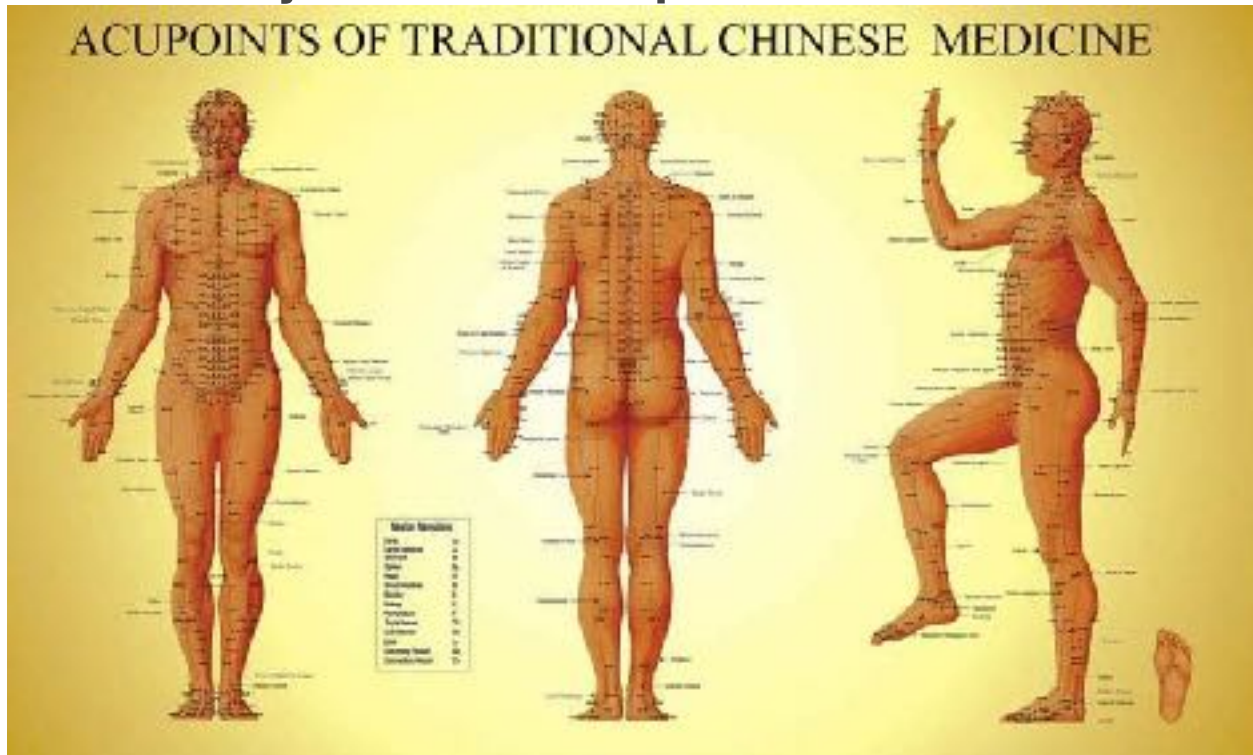
Urinary system: kidneys, ureters, bladder and urethra involved in fluid balance, electrolyte balance and excretion of urine.

Vestibular system: contributes to our balance and our sense of spatial orientation.

+ **Human Light System:** information transfer using electromagnetic waves – Light.

Human Light Systems, History:

Meridian System and Acupuncture:



Acupuncture points

The **meridian system** is a **traditional Chinese medicine** belief about a path through which the life-energy known as “qi” flows.

The meridian network is typically divided into 2 categories, the *jingmai* or meridian channels and the *luomai* or associated vessels (sometimes called “collaterals”). The jingmai contain the 12 tendinomuscular meridians, the 12 divergent meridians, the 12 principal meridians, the 8 extraordinary vessels as well as the Huato channel, a set of bilateral points on the lower back whose discovery is attributed to a famous physician in ancient China. The collaterals contain 15 major arteries that connect the 12 principal meridians in various ways, in addition to the interaction with their associated internal organs and other related internal structures. The collateral system also incorporates a branching expanse of capillary

like vessels which spread throughout the body, namely in the 12 cutaneous regions as well as emanating from each point on the principal meridians. If one counts the number of unique points on each meridian, the total comes to 361, although 365 is usually used since it coincides with the number of days in a year. Note that this method ignores the fact that the bulk of acupoints are bilateral, making the actual total 670.

There are about 400 **acupuncture points** (not counting bilateral points twice) most of which are situated along the major 20 pathways (i.e. 12 primary & 8 extraordinary channels). However by the 2nd Century AD, 649 acupuncture points were recognized in China (reckoned by counting bilateral points twice). There are “Twelve Principal Meridians” where each meridian corresponds to either a hollow or solid organ; interacting with it and extending along a particular extremity (i.e. arm or leg). There are also “Eight Extraordinary Channels”, two of which have their own sets of points, and the remaining ones connecting points on other channels.

Twelve standard meridians

The twelve standard meridians, also called Principal Meridians, are divided into Yin and Yang groups. The Yin meridians of the arm are Lung, Heart, and Pericardium. The Yang meridians of the arm are Large Intestine, Small Intestine, and Triple Burner. The Yin Meridians of the leg are Spleen, Kidney, and Liver. The Yang meridians of the leg are Stomach, Bladder, and Gall Bladder.

What is the Meridian System?

Chinese medicine believes there is a distribution network for the fundamental substances of Qi (pronounced chee), Blood and Body Fluids throughout the body. (These fundamental substances are different from the common western understandings of these terms, and their concepts are important for maintaining health using Chinese medicine.) This distribution network called the Meridian System looks like a giant web, linking different areas of our body together. Its pathways make up a comprehensive yet complex body map that supplies vital energy to every part of the body. Philosophically, the Meridian System explains how we live, and why we become sick.

The Chinese meaning of the word Meridian

“Jing luo”, the Chinese term for meridian has two interesting concepts which make up the basic structural components of the Meridian System. These concepts date back several thousand years and are reflected in the ancient Chinese medical text, Huang Di Nei Jing (The Yellow Emperor’s Classic of Internal Medicine), which says: Jing meridians act as the interior. Those which branch off horizontally are luo meridians. Jing means to pass through or pathway and refers to the vertical channels. Luo means network and refers to the networks that branch off from the vertical channels (Jing). Both Jing and Luo mean link or connection, and they are bound closely together to form channels.

Meridians are not blood vessels

Although meridians work as a channel system which carries and distributes qi and blood, they are not blood vessels and have no anatomical channel structure. Many meridian research projects have been carried out over the years testing different hypotheses of how this system works. Physiological hypotheses such as nervous reflex models have been put forward, but researchers have not yet come up with a definitive model that can give a complete anatomical description of the Meridian System.

Development of the Meridian Theory

According to the ancient literature of Traditional Chinese Medicine (TCM), it is hypothesized the meridian theory developed in the following ways:

1. Observation of a “needle” feeling projected elsewhere in the body
When certain specific points on the skin were pierced by fine needles, feelings like soreness, numbness, heaviness and swelling would occur-a reaction known as the “needle” feeling. It was found these “needle’ feelings were always felt on a particular skin area, following a certain direction and pathway. Ancient Chinese medicine philosophers worked out the patterns of the needle points (acupuncture points) in the body, which later formed the basis of the meridian theory.
2. Observation of the effects of acupuncture points
In ancient times, Chinese people would experiment and stimulate different acupuncture points to get symptomatic relief from a particular ailment. As they practiced these acupuncture trials, they found points

with similar effects were always distributed in an organized pattern. After classification and analysis, a meridian map was created.

3. Correlation of certain illnesses with acupuncture points

From every day experiences, Chinese people gradually recognized when a particular disease or organ disorder occurred, they would feel pain in a particular part of their skin, which was often associated with a rash or skin color changes. These correlations were analyzed according to the ancient philosophies such as the yin-yang and the five elements theories and further developed into an integrated scientific and artistic model for maintaining health in TCM.

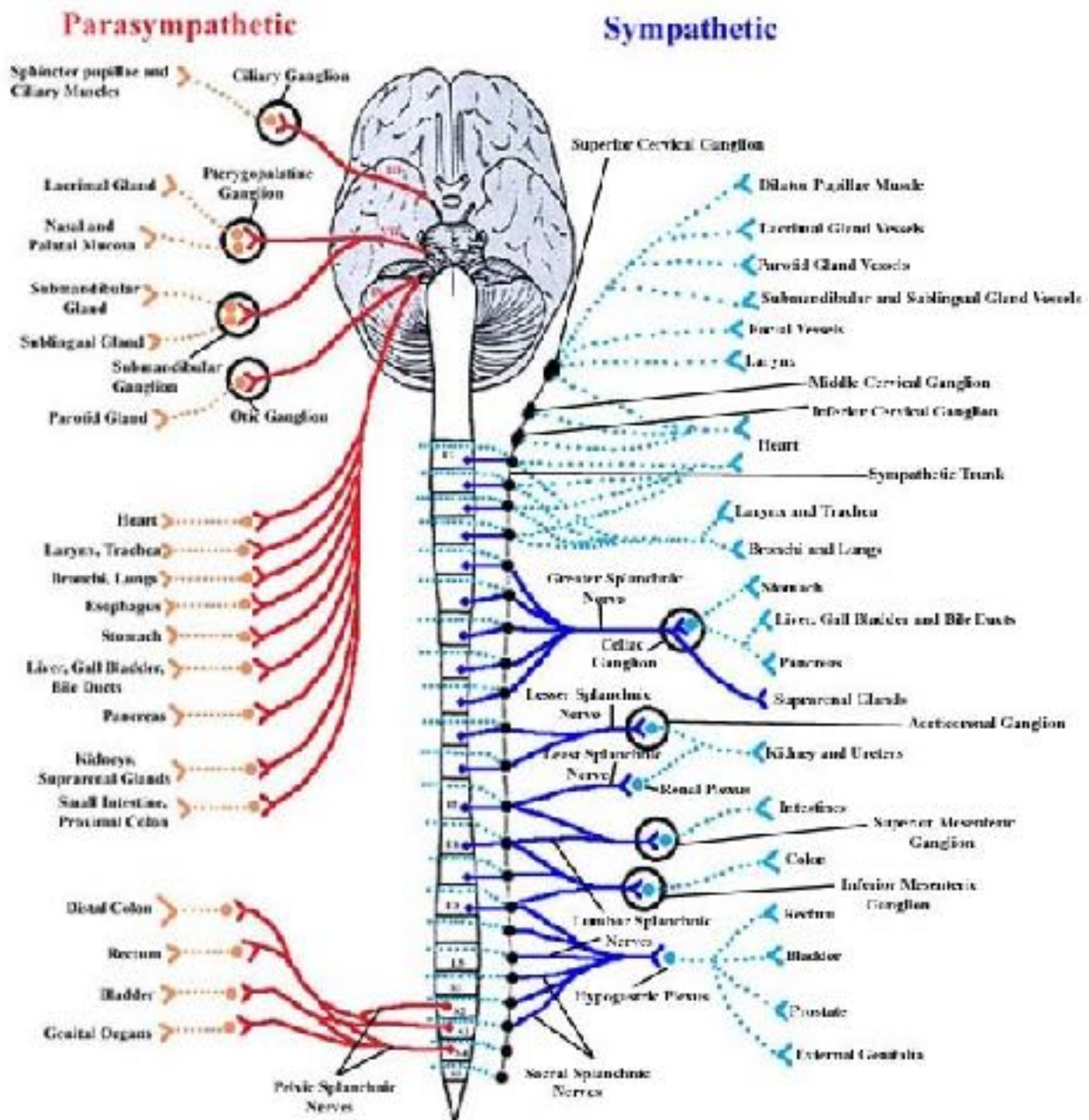
Meridians are a collection of acupuncture points

By connecting and uniting different parts of our body, meridians provide the transport service for the fundamental substances of qi, blood, and body fluids. The flow of qi in the Meridian System concentrates or “injects” in certain areas of the skin’s surface. These areas are very small points, otherwise known as “acupuncture points”. Although acupuncture points are located externally and superficially, they can affect the internal functions of our body. There are 365 acupuncture points, and each point belongs to a particular meridian channel that connects to specific organs.

Classification of Meridians

The Meridian System has 12 principal meridians that correspond to the yin and yang organs and the pericardium. (Yin organs are usually those without an empty cavity, and include the liver, heart, spleen, lungs, and kidneys. Yang organs are organs with an empty cavity such as the gall bladder, small intestine, stomach, large intestine and bladder. In TCM, yin and yang organs are physiological functional units that incorporate a much broader meaning than common western thinking.) Meridians linked with yin organs are known as yin meridians; if they are linked to yang organs, they are known as yang meridians. In addition to the 12 principal meridians, there are eight extra meridians and smaller network-like Luo meridians. Among the eight extra meridians, the Governing Vessel and the Conception Vessel are considered the most important channels, because they contain acupuncture points which are independent of the twelve principal meridians.

Kundalini System:

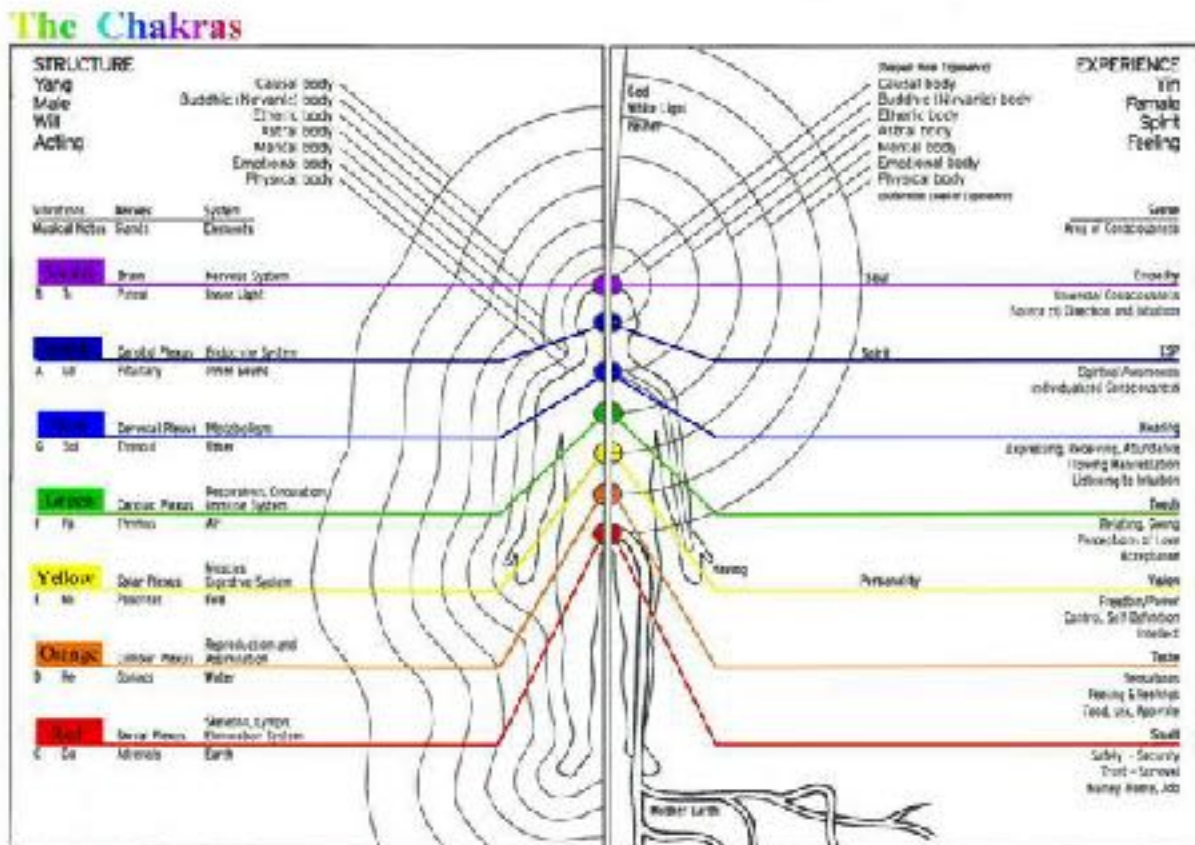


Kundalini System

Kundalini in yogic theory, is a primal energy, or *shakti*, located at the base of the spine. Different spiritual traditions teach methods of “**awakening**” kundalini for the purpose of reaching spiritual enlightenment. The Yoga Upanishads describe Kundalini as lying

“coiled” at the base of the spine, represented as either a goddess or sleeping serpent waiting to be awakened. In modern commentaries, Kundalini has been called an unconscious, instinctive or libidinal force, or “mother energy or intelligence of complete maturation”. Kundalini awakening is said to result in deep meditation, enlightenment and bliss. This awakening involves the Kundalini physically moving up the central channel to reach within the **Sahasrara Chakra** at the top of the head. Many systems of yoga focus on the awakening of **Kundalini** through **meditation, pranayama breathing**, the practice of **asana** and chanting of **mantras**. In physical terms, one commonly reports the Kundalini experience to be a feeling of electric current running along the spine.

Chakra System:

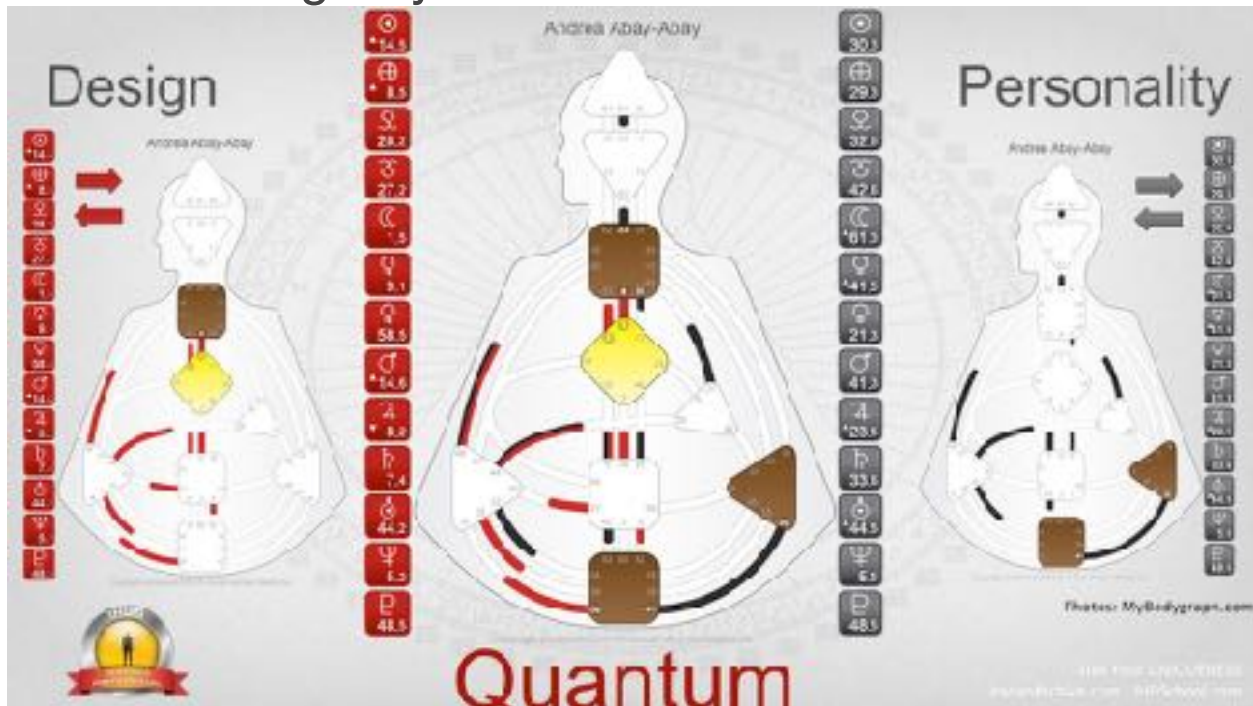


Chakra System

Chakras are energy points or nodes in the **subtle body**. Chakras are part of the subtle body, not the physical body, and as such are the

meeting points of the subtle (non-physical) energy channels called nadis. Nadis are channels in the subtle body through which the life force (prana) (non-physical) or vital energy (non-physical) moves. Various scriptural texts and teachings present a different number of chakras. There are many chakras in the subtle human body according to the tantric texts, but there are seven chakras that are considered to be the most important ones.

Human Design System:



Human Design System

A holistic view of the world

All living beings are part of a single holistic field and therefore all of us continually interact with each other and the world around us. We are not separate but are part of the whole. We are connected to the whole by tiny particles called neutrinos and we are connected to the other by aura, the invisible energy field that surrounds each of us.

If we see ourselves as separate from our environment and those around us, it is easy to assume that the way we interact and communicate is something that we can control or that can happen or

not, according to our will. That every decision we make is up to us and is made independently from our environment. This is not the case.

Uniqueness

We are each part of the whole, but we are also unique. We each bring our own brand of uniqueness to the other and the world around us. This is our gift to the whole. Being different from the other, we bring something new into the world.

When we are simply part of the homogenized world, we do this in order to fit in. Our true nature does not get to express itself and this can make our life very painful and uncomfortable. This also inevitably leads to all kinds of wrong decisions. We need to acknowledge that we all have different requirements and needs. To understand your own unique nature is the first step towards self love and fulfillment.

Neutrinos

Human Design uses your birth data to calculate your rave chart, also known as your Bodygraph. This is based on the science of Neutrinos, tiny particles that carry mass and information and which determine your unique imprinting.

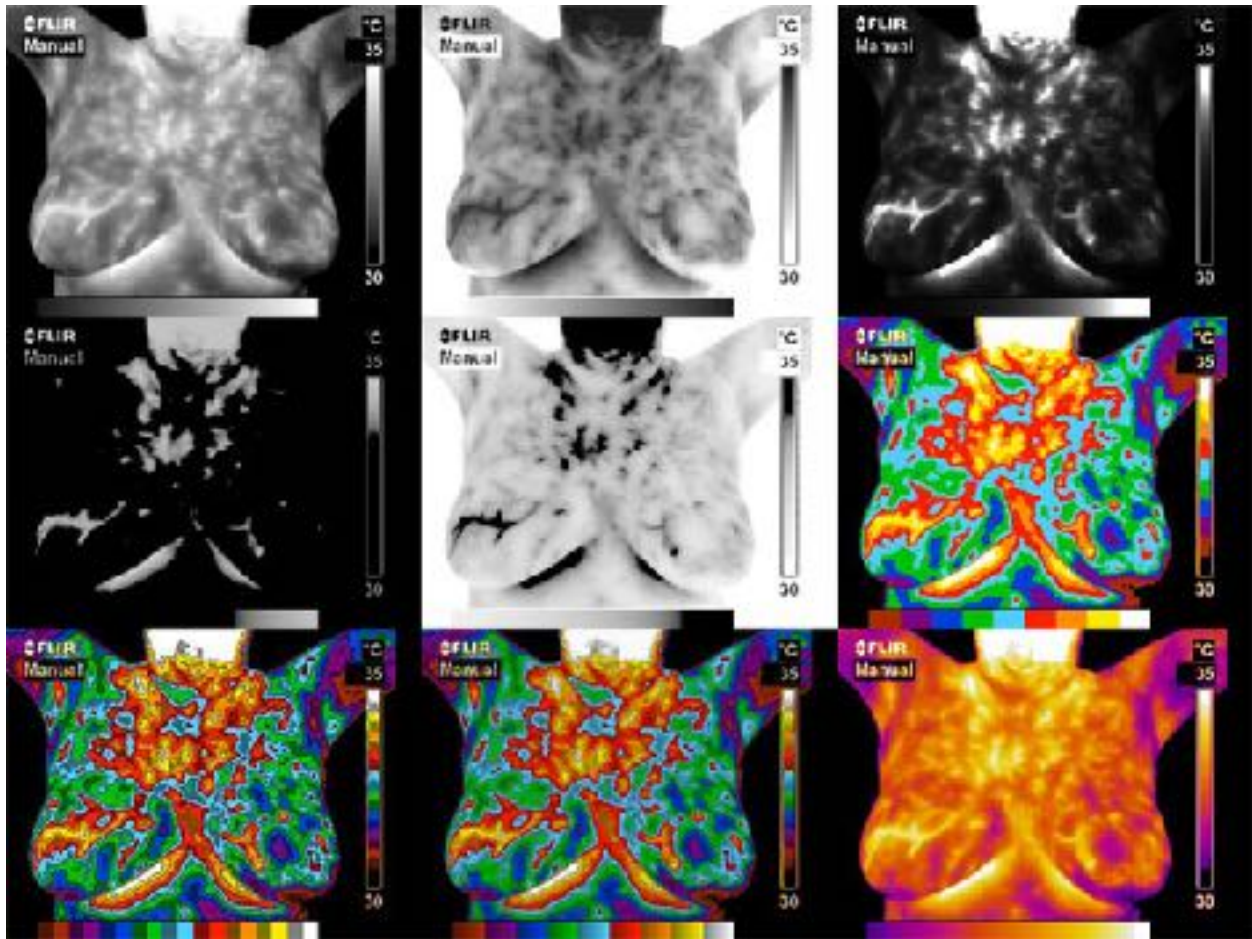
We live in a dense neutrino ocean with trillions of neutrinos originating from the stars in our solar system. They pass through everything leaving an imprint of information wherever they travel.

The Synthesis

The **Human Design System** is a synthesis of two streams of science, traditional and modern. The traditional Sciences: Astrology, the Chakra system, the Kabbalah and most importantly, the I'Ching, the Book of Changes – these are the traditional elements in the synthesis that is Human Design.

Combined with the modern science of reading the genetic code, this offers you a profound insight into how you are designed to navigate the material world.

Infrared Medical System:



Infrared Medical System

Many machine-vision applications rely on visible-light cameras; however, more specialized applications demand imaging in the non visible spectrum. Those involved in developing military, medical, and spectroscopy systems may require infrared (IR) cameras that use different technologies to capture radiation from the shortwave-infrared (SWIR) to the longwave-infrared (LWIR) spectrum.

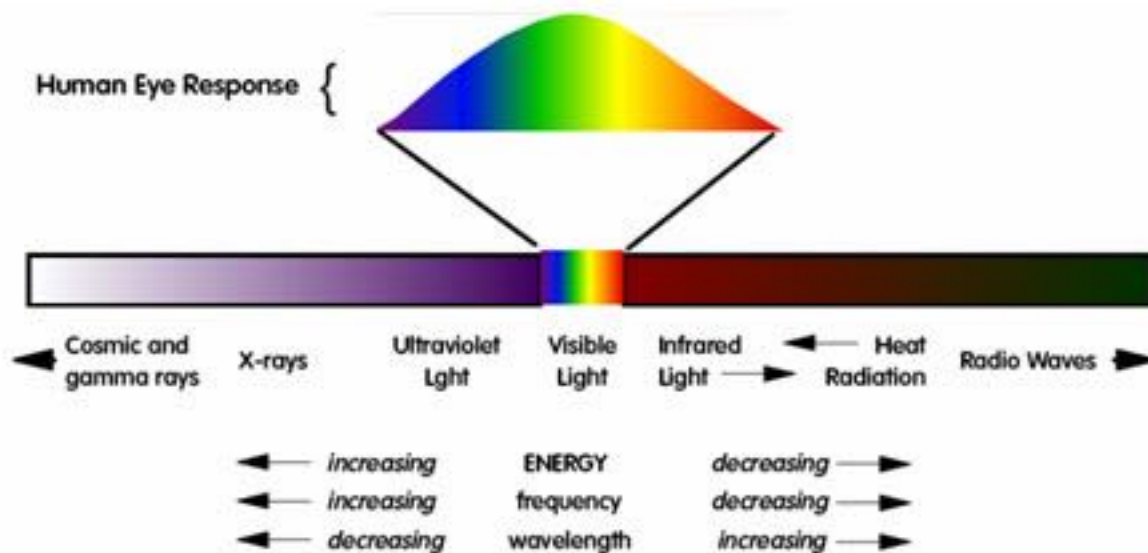
The state-of-the-art optical topography system transmits near-infrared light into the patient's head and collects the reflected information from the cerebral cortex.

Abnormal body temperature is a natural indicator of illness. **Infrared thermography (IRT)** is a fast, passive, non-contact and non-invasive alternative to conventional clinical thermometers for monitoring body temperature. Besides, **IRT** can also map body surface temperature remotely. Last five decades witnessed a steady increase in the utility of thermal imaging cameras to obtain correlations between the

thermal physiology and skin temperature. IRT has been successfully used in diagnosis of breast cancer, diabetes neuropathy and peripheral vascular disorders. It has also been used to detect problems associated with gynecology, kidney transplantation, dermatology, heart, neonatal physiology, fever screening and brain imaging.

With the advent of modern **infrared cameras**, data acquisition and processing techniques, it is now possible to have real time high resolution thermographic images, which is likely to surge further research in this field. The present efforts are focused on automatic analysis of temperature distribution of regions of interest and their statistical analysis for detection of abnormalities. This critical review focuses on advances in the area of medical **IRT**. The basics of **IRT**, essential theoretical background, the procedures adopted for various measurements and applications of IRT in various medical fields are discussed in this review. Besides background information is provided for beginners for better understanding of the subject.

Ultra Violet Light:



Ultra Violet Light

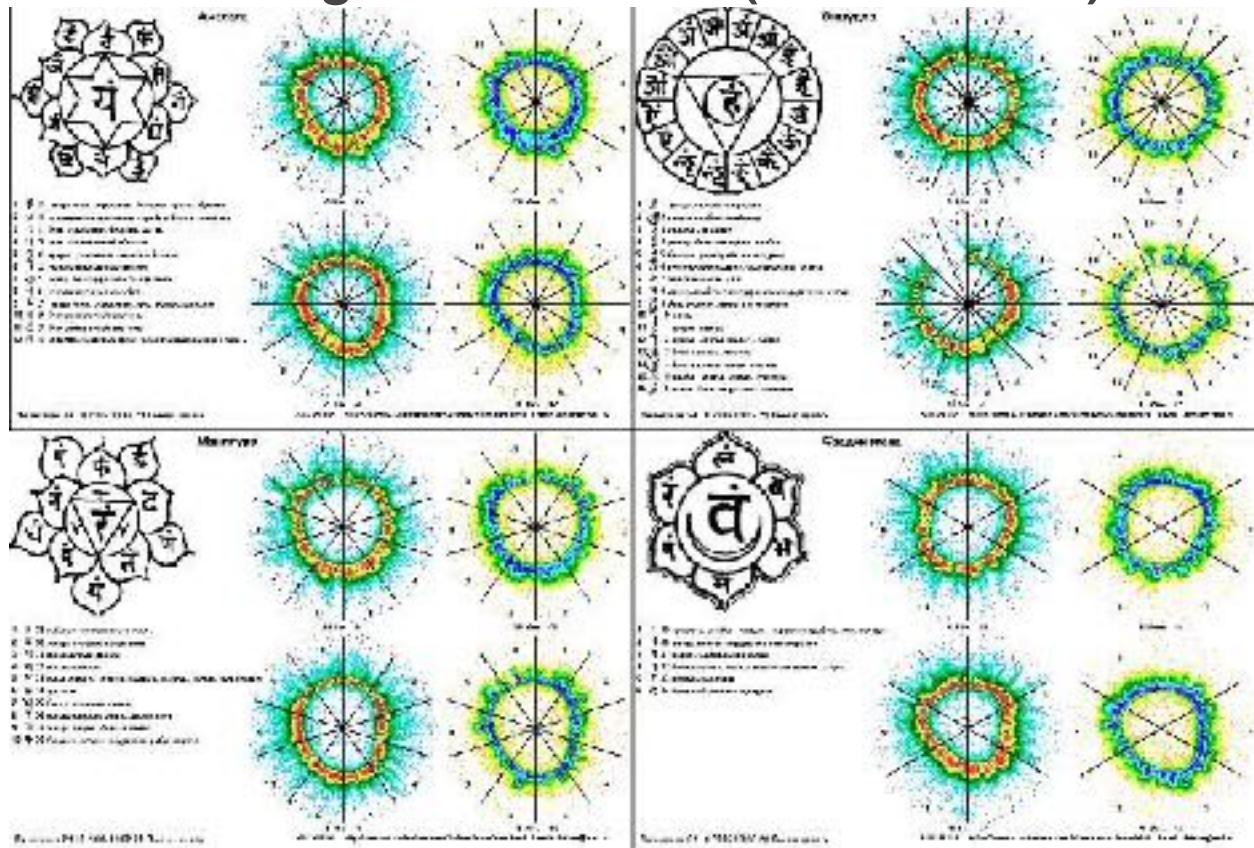
UV-B lamps are lamps that emit a spectrum of ultraviolet light with wavelengths ranging from 290-320 nanometers. This spectrum is also commonly called the biological spectrum due to the human body's

sensitivity to light of such a wavelength. UV-B light does not tan the skin very much, compared to the UV-A lamps that are used in tanning beds.

Ultraviolet light treatment uses a particular band of the non visible light spectrum to treat psoriasis and a variety of other skin diseases. It can be used alone or in combination with other medications applied directly to the skin or taken internally.

We use UV lamp in **Human Light System Experiments**.

Gas Discharge Visualisation (Kirlian Effect):

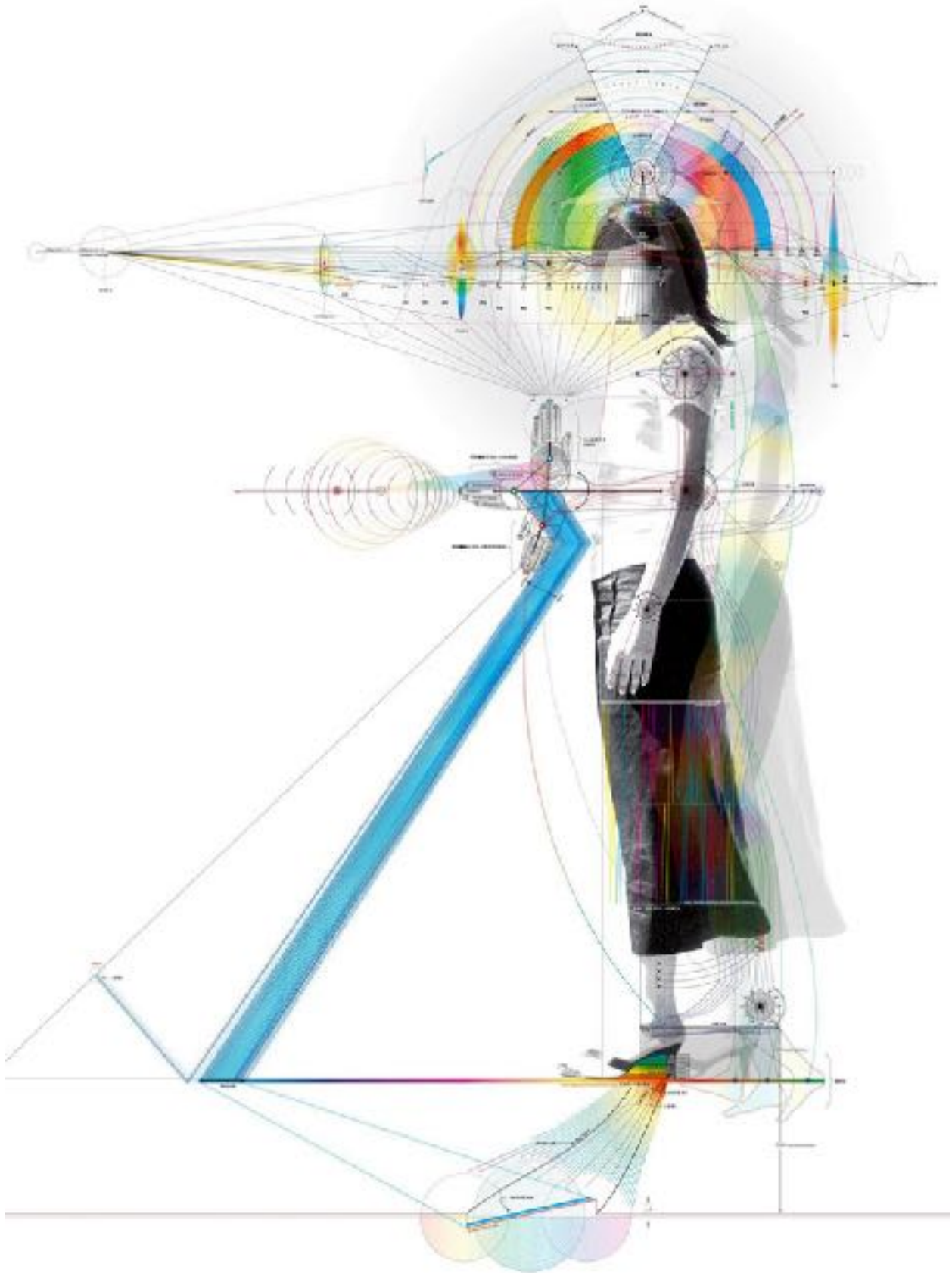


Gas Discharge Visualisation

Gas Discharge Visualization Technique (GDV) is computer registration and analysis of gas discharge glow (**GDV-images**) of any biological objects placed in a high intensity electromagnetic field

GDV Bioelectrography History (on the **Art Science and Technologies Forum**)

EM Systems:



Human Electric Energy

Human Electric Energy

Nerve impulses are electrical energy signals; and, they create energy-fields around the body and electro-magnetic energy waves that can travel away from the body.

Nerve Impulses – Electricity in the Body

A nerve impulse, demonstrates human electricity in the body.

Image originally from the Science Museum website.

Human electricity energy is generated by chemical processes in nerve cells. Billions of nerve impulses travel throughout the human brain and nervous system. A nerve impulse is a wave of electrical activity that passes from one end of nerve cell to another. Each impulse is the same size it; it is the frequency, impulses per second, that carries information about the intensity of the nerve signal.

Neurons are the basic unit of the nervous system. Neurons are responsible for sending, receiving, and interpreting information from all parts of the body.

Nervous System – Human Electrical System

The nervous system is a network of cells called neurons which transmit information in the form of electrical signals. In the brain alone there are around 100 billion and there is a similar amount in the nervous system tissues throughout the rest of the body.

Nerves for relaying information to and from the senses.

Nerves for controlling the internal functions of the body.

Nerves for muscle movement.

Nerves for thinking.

Human Magnetism – Electro-magnetic Field

Electricity passing through a wire creates a magnetism; human electricity can create a human magnetism.

Image from the

Science360 website.

human electro magnetic field around the body. As electricity passes through a metal wire it causes an energy field or magnetic field. In a similar way, human electricity in the brain and nervous system creates human magnetic fields. There are billions of nerve impulses in the

body and these are constantly creating complex human magnetic fields.

The human heart is a source of electro-magnetism that, even at a few meters away, is detectable by modern scientific instruments.

Magnetic Induction- Energy Transfer

Electromagnetic induction where energy transfers from one wire into another. The image on the right shows an input electric current producing a magnetic field around one wire; this field passes through another wire and creates an output electric current. In physical science, this is called magnetic induction.

Similarly, to magnetic induction in metal wires, the human electromagnetic field can be felt, or can influence, other people who are standing by. From your experience, do some people create a feeling within you when you are close by?

When close to some people, you may feel as if your body and mind becomes more energised, more hopeful and optimistic.

When close to other people, you may feel as if your energy drains away, a depressing or lazy feeling.

Electricity Waves – Energy Travel over a Long Distance

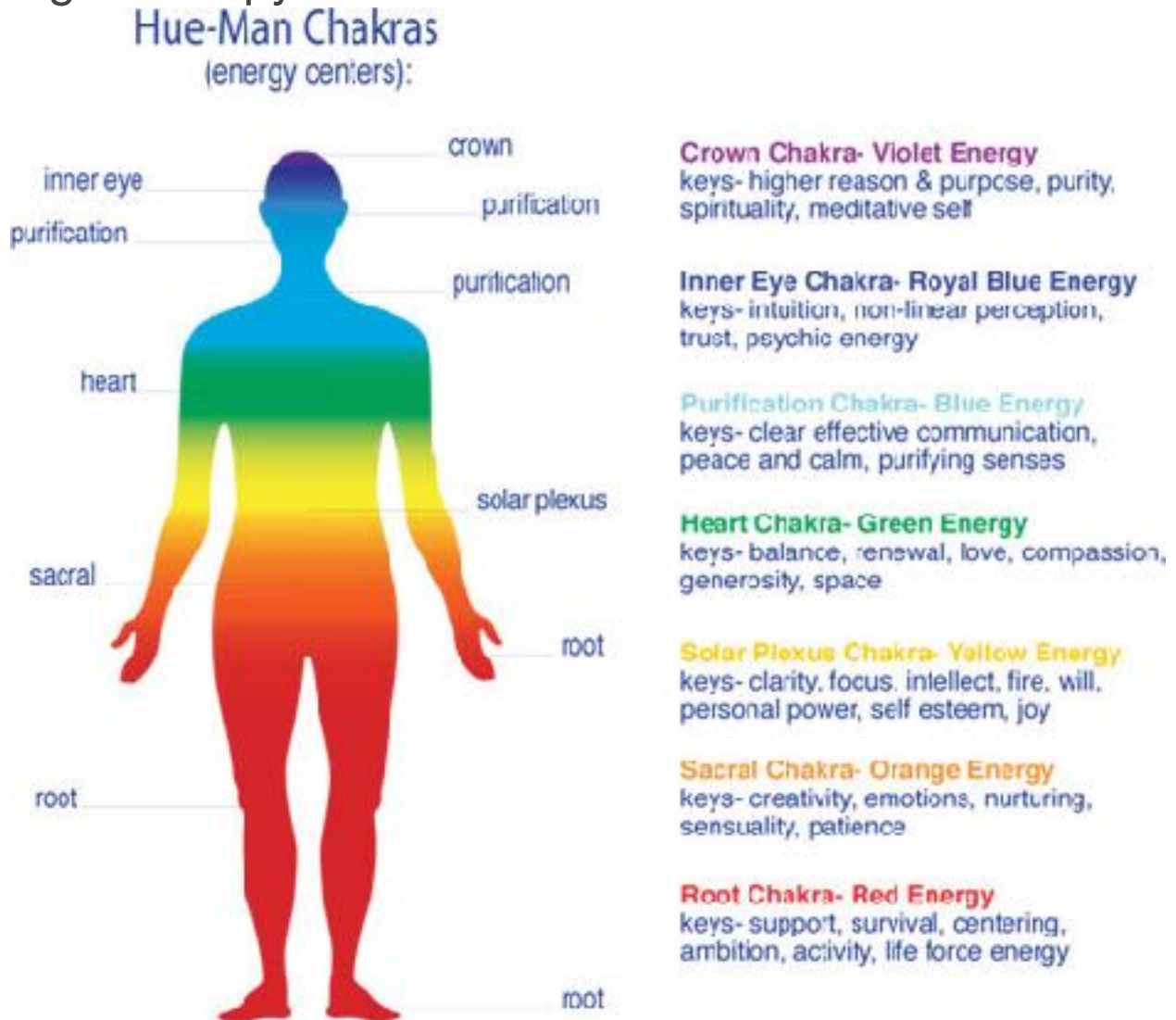
Energy wave, demonstrates that human electricity may also transmit to great distances.

Electric force can transform into different types of energy waves, such as heat, radiation, radio and micro waves; and these energy waves can travel a long distance.

A changing magnetic field will induce a changing electric field and vice-versa, the two are linked. These changing fields form electromagnetic waves. Electromagnetic waves can travel not only through air and solid materials, but also through space.

The human nervous system can create electric energy waves that can be measured with scientific instruments. The human body produces infra-red radiation that, with night vision equipment, can be seen from miles away.

Light therapy:



Light therapy

Light therapy or phototherapy (classically referred to as heliotherapy) consists of exposure to daylight or to specific wavelengths of light using polychromatic polarized light, lasers, light-emitting diodes, fluorescent lamps, dichroic lamps or very bright, full-spectrum light. The light is administered for a prescribed amount of time and, in some cases, at a specific time of day. One common use of the term is associated with the treatment of skin disorders, chiefly psoriasis, acne vulgaris, eczema and neonatal jaundice.

Light therapy which strikes the retina of the eyes is used to treat circadian rhythm disorders such as delayed sleep phase disorder and can also be used to treat seasonal affective disorder, with some support for its use also with non-seasonal psychiatric disorders.



Experiments:

Healers experiment, Mantra experiment, Tai Chi experiment, Meditation experiment, Group working experiment, Intuitive Information Sight experiment, Education experiment, Dance experiment, Animals experiment, Painting experiment

Materials and Technologies:

GDV CAMERA by Dr. Korotkov, Digital CCD camera C8484-16C (HAMAMATSU PHOTONICS K.K.), TimeWaver Med, "GDV Eco-Tester" instrument and "**GDVSputnik**", **Translighters**, **Bio-Well**

Measurement of air temperature, atmospheric pressure, Radioactivity of the environment, humidity, etc

GDV CAMERA

The “**GDV CAMERA**” enables to carry out observation, registration and computer processing of a subject’s energy field. **Bio-Well** is a new model of **GDV CAMERA** by **Dr. Korotkov**.

UV Digital CCD Camera

C8484-16C

The C8484-16C is a new UV CCD digital camera using an advanced 1/2 inch progressive scan interline CCD chip with high sensitivity in the UV region while offering substantially better noise characteristics at high frame rates. The C8484-16C 1/2 inch format 1344 x 1024 resolution CCD with small (4.65 um) pixels provides extremely high resolution. A CameraLink digital output ensures compatibility with a large number of commercially available frame grabber boards.

Standard C-mount lens coupling makes it easy to connect to optical microscopes and lenses. Fast electronic shuttering, fast readout and low noise integration all combine to make this camera a great choice for both high and low level UV imaging applications.

FEATURES

- Analog contrast enhancement
- Low readout noise design (14 electrons typ.)
- 12 bit digitizer
- High sensitivity in UV region (Typically 20 to 25% at 250nm)
- Progressive scan interline readout with no mechanical shutter
- Anti-Blooming function with vertical overflow drain structure
- Extremely high resolution with 1344 × 1024 pixels/small pixel size (4.65 um)

TimeWaver Med

finding and dissolving Causes in the Information Field

TimeWaver Med analyses the deeper causes of diseases in the information field and dissolves them from the root in the information field. The organ-coherence-module evaluates the connections of all

organ fields and balances them again through a cause-oriented balancing.

TimeWaver Med owns a multilingual database with more than 600 categories and more than 1,000,000 entries and oscillation patterns.

Where Body and Mind meet

The information field analysis and the recovery of the balance (balancing) refer to ten levels of the human being, among other things the body, the oscillation or frequency level, the electricity and energy of the body on a physical level and the pure information level.

The levels extend to the psychological and the consciousness level as possible causes of diseases. TimeWaver Med further finds the equivalents of illnesses in the information field which relate to viruses, bacteria or toxins

Human Light System Experiments:

Healer's Experiments:





Report of the experimental results of the educational sessions of the International Academy for Scientific Mental Healing (Drossinakis IAWG) under the direction of Prof. Dr. Konstantin Korotkov

Methods

In the process of educational session of the International Academy for Scientific Mental Healing (Drossinakis IAWG) the following experiments was performed under the direction of Prof. Dr. Konstantin Korotkov:

1. Measuring Energy Fields of participants initially and in the process of experiments with EPI/GDV CAMERA.

2. Measuring Energy of the Environment with “GDV Eco-Tester” instrument and “GDVSputnik” sensor.

3. Measuring radioactivity of the environment.

4. Measuring UV emission of people during healing sessions.

5. Measuring Energy Fields of patients initially and after healing sessions with EPI/GDV instrument.

All members of Drossinakis’ group participated in the sessions.

Patients were volunteers – citizens of St. Petersburg, all women, age from 4 to 66 years old.

Results

1. Energy Fields of participants.

For all participants we may confirm increase of the Energy Field parameters in the process of experimental sessions. This we may see both on individual data and on statistical processing.

This may tell us of the positive effect of the healing sessions on the participants. (Positive effect – increase of the Energy Field and decrease of Entropy).

2. Energy Fields of patients.

We may see different situation for different patients:

Decrease of parameters for patients 1, 2 and 4;

Increase of parameters for patients 3, 5, and 6.

For patient 7 decrease in the first sessions and increase in the second.

This correlates with our previous observations that stabilization of Energy

Field after healing session may take several hours and all sessions should be done in several days.

3. Radioactivity of the environment.

During all sessions strong variations of the radioactivity parameter was detected. It changed from 0.06 mcZ to 0.18 mcZ with background level at 0.09 mcZ. This confirms our previous observations that energy activity may change the structure of the space [Korotkov K. Science Confirms Reconnective Healing, 2011].

4. Energy of the Environment with “Eco-Tester” instrument and “Sputnik” sensor. “Sputnik” sensor was operating during all the session in the automatic mode. Data was saved to the memory card

and later processed in the “GDV Scientific Laboratory” program. For the convenience data is presented hour-by-hour. Strait lines represent 25% and 75% percentiles. As we see from the graphs, all significant moments of the sessions were reflected by the variation of the parameters. This confirms our previous observations that energy activity may change the structure of the space [Korotkov K. Science Confirms Reconnective Healing, 2011].

5. UV emission of people during healing sessions.

High Performance UV Digital Camera C8484-16C from Hamamatsu Co and UV Light source was used in this experiment. For the first time strong transformation of UV light parameters in the process of healing was detected. As a rule, initially it was detected for the hands of a healer, later in some cases it propagated to the body of a healer, and in one case – to the body of a healee. Simultaneously colorization of the whole image was detected.

Without UV Light source bright moving dots were detected in some cases as well.

These data confirm idea that in the process of healing hands and body of a healer emanates strong radiation, which may be detected in different ranges of frequencies. Experimental data of this kind were received for the first time in the research practice.

Conclusions

1. In the process of educational session of the International Academy for Scientific Mental Healing (Drossinakis IAWG) a set of experiments was performed under the direction of Prof. Dr. Konstantin Korotkov with several instrumental methods.

2. All results confirm strong detectable effects of the healing sessions performed by Christos Drossinakis and his students.

3. Several measurements confirm our previous observations that energy activity may change the structure of the space in the environment [Korotkov K. Science Confirms Reconnective Healing, 2011].

4. Presented approach may be utilized for testing abilities of students of the International Academy for Scientific Mental Healing (Drossinakis IAWG) for practical energy activity.

5. Presented results create the basis for extended experiments with collecting statistically significant data.



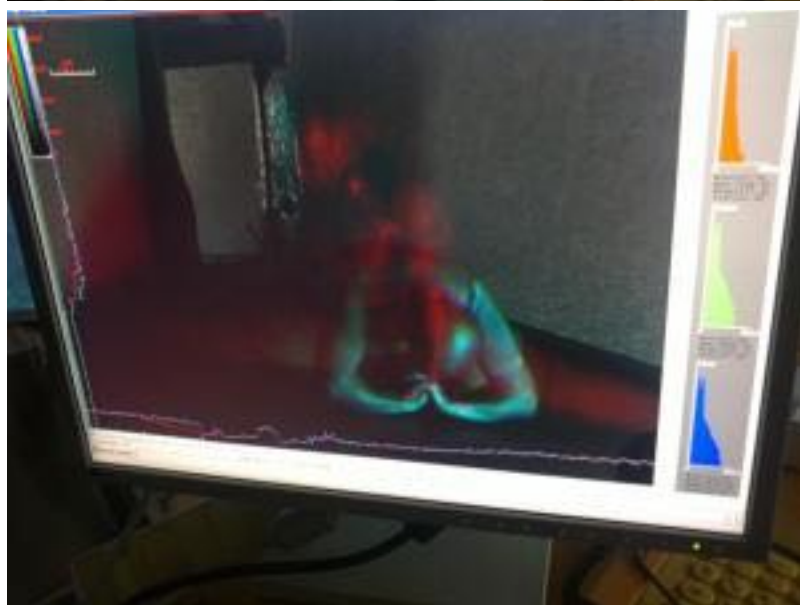
Korotkov.tv







Mantra Experiment:





Tai chi experiment:



Environmental experiment with Translighters and GDV SPUTNIK 2013:

Please see **GDV SPUTNIK** Results here: <http://www.gdv Sputnik.com/>
Intuitive Information Sight experiment 2003-2014:

Please see **ISIIS** reports here: <http://www.isiis.org/>

Educational experiment in The Biointernet School 2014:

Please see reports on **The Biointernet School** website: <http://thebiointernet.org/>

Working group:

Konstantin Korotkov, PhD, (Russia)
Sergey Avdeev, PhD (Lietuva)
Galina Gajova (Lietuva)
Tatiana Karovina (Czech Republic)
Kirill Korotkov (Czech Republic)
Dr. Alexander Dvoryanchikov (Russia)
Oleg Bazhenov (Czech Republic)
Maria Shlenskaya (Czech Republic)
Martina Hrubá (Slovakia)
Krishna Madappa (USA)
Emrik Suichies (Netherlands)
Francis Chen (Taiwan)
Boris Petrovich (Brasilia)
Rustam Adyukov (Russia)
Dmitry Orlov (Russia)
Evgeny Avdeev (Russia)
Karen O'Dell (USA)
Jeff Grant (Canada)
Hesham Sami (Switzerland)

Thank You:

Alexander von Hagemeister (Russia)
Lara Weigmann (Germany)
Mark Komissarov (USA)
Nikita Stepanov (Russia)
Miroslav Maduda (Austria)
Konstantin Pavlidis (UK)
Christos Drossinakis (Germany)