

## Teotihuacan pyramids Bio-Well measurements

02.11.2019 we were privileged to visit tunnels, recently excavated under Sun and Quetzalcoatl pyramids. Both tunnels have 105 meters and end exactly under the center of a pyramid. Sun pyramid tunnel is narrow, curvy and the walls left unprocessed, while Quetzalcoatl tunnel is strait, wide and all the walls are processed. Both tunnels were filled with earth to the top about 2000 years ago (according to carbon dating of wood samples). To define the time of construction of tunnels is impossible.

We did measurements in tunnels with Bio-Well Sputnik sensor, as well as at the top of Quetzalcoatl pyramid. Result are presented at Fig.1. At the same graph presented results of 2012 measurements.

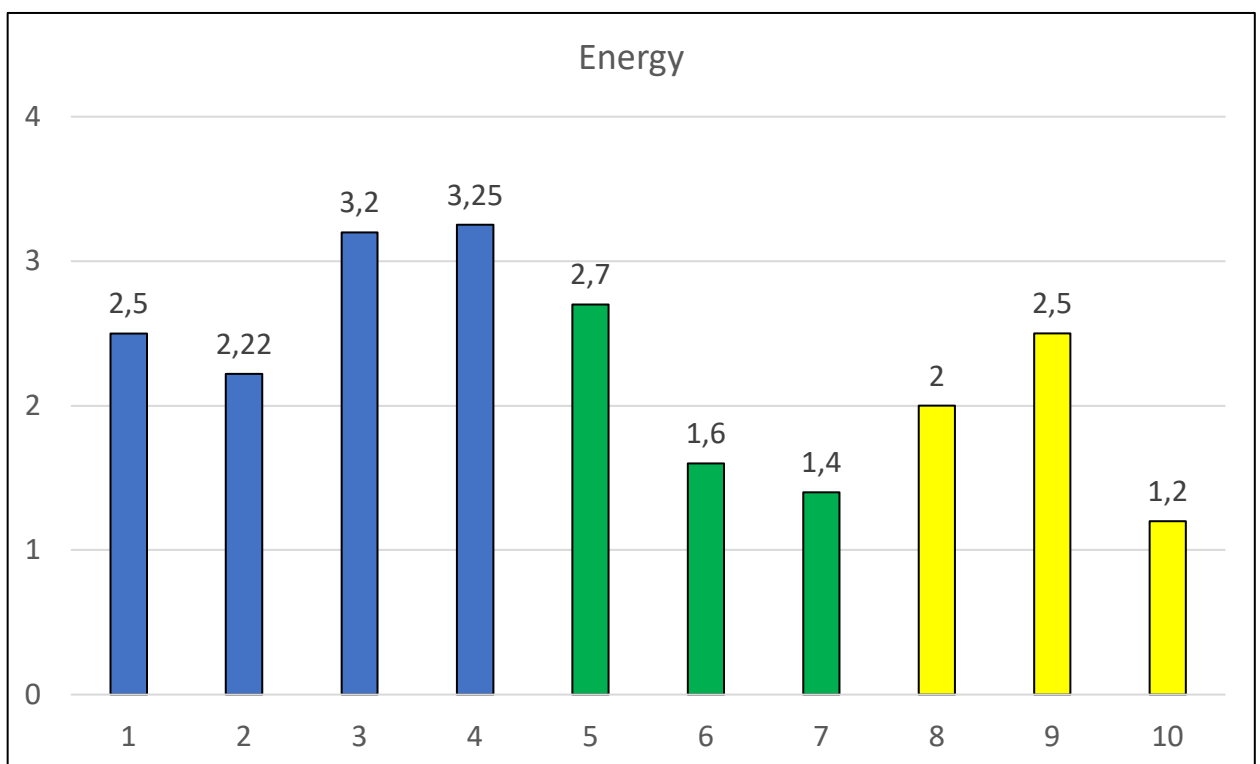


Fig.1. Results of Sputnik measurements. 1 - hotel 21.12.12 morning; 2 - hotel 21.12.12 afternoon; 3 - Moon pyramid 20.12.12; 4 - Sun pyramid 21.12.12; 5 - Quetzalcoatl pyramid 02.11.19; 6 - Tunnel Sun pyramid 02.11.19; 7 - Tunnel Quetzalcoatl pyramid 02.11.19; 8 - Chichen-Itza pyramid 23.12.12; 9 - Chichen-Itza meditations 23.12.12; 10 - Cancun hotel 24.12.12 morning.

As we see from the graphs, Energy parameters had the highest values at Teotihuacan pyramids, with logical Energy sequence: Sun pyramid > Moon pyramid > Quetzalcoatl pyramid. Chichen-Itza pyramid Energy was lower, but increased during collective meditation. Energy in the tunnels was much lower, and being there

for about 40 minutes in each of them we all felt tired. Energy fields of archeologists working in the tunnels demonstrate its influence to human Energy Field (Fig.2).

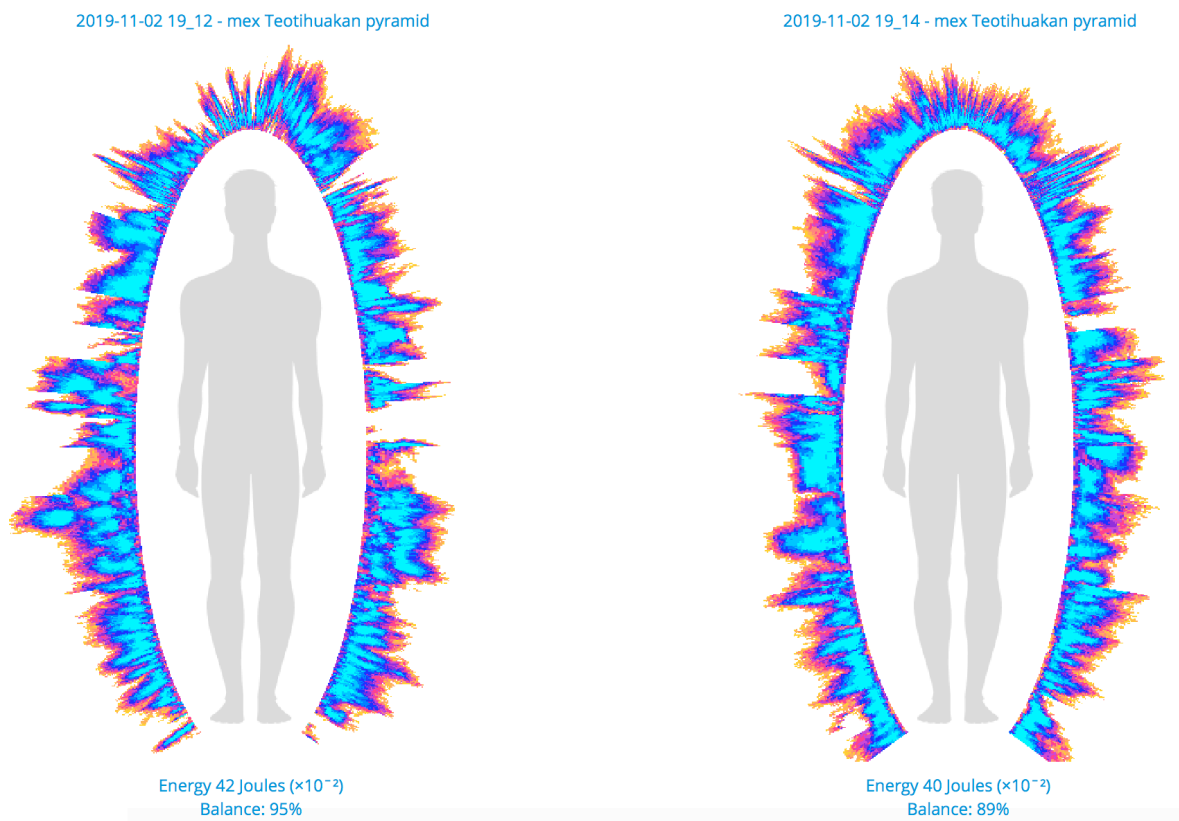


Fig.2. Energy fields of archeologists working in the tunnels.

It is interesting to present results from 2012 measurements. In the morning December 20 in the hotel situated about 2 km from the pyramids Energy was increasing for two hours and only then became stable (Fig.3). Similar process was recorded December 21. During the day energy was quite stable in both days.

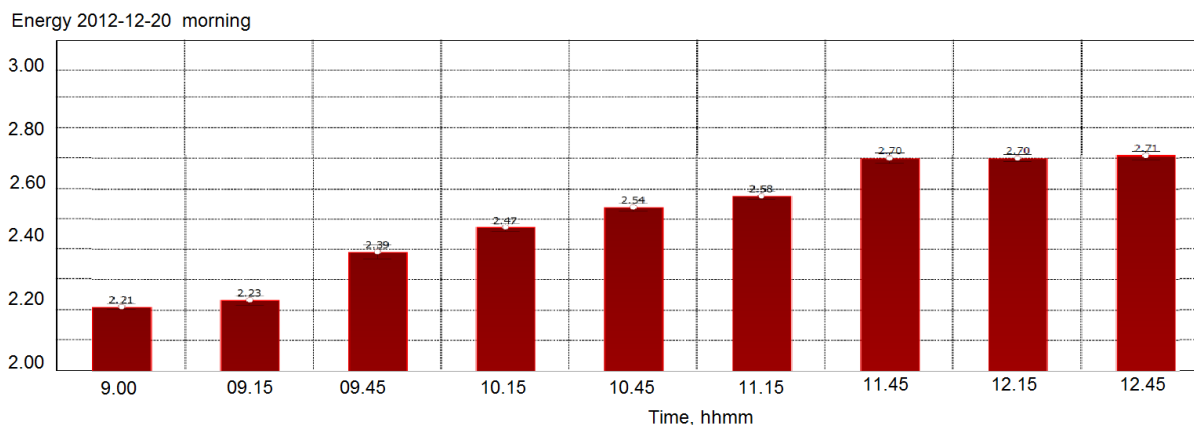


Fig.3. Time dynamics of Energy parameter in the morning December 20.2012 in the hotel.

In both days collective meditations at the Teotihuacan pyramids were conducted by Don Miguel Ruiz and his group of students. A special agreement allowed to make it when pyramid complex was closed for visitors. Sputnik sensor was position nearby the group and in both cases increase of energy was detected. We arrived to the Pyramids at 5 am, we were standing in total darkness looking to the stars with great pyramid at our back. We meditated and the feeling of Universe penetrated deeper and deeper in our Souls. By the end Don Ruiz sent his intentions to the Sensor from the distance.

As we see from the graph fig,4, all these moments were reflected on the Sensor's parameters time dynamics. Statistical processing of these data clearly demonstrated these effects (fig.5). The energy nearby pyramids was much higher than in the hotel and it had strong peaks during meditation.

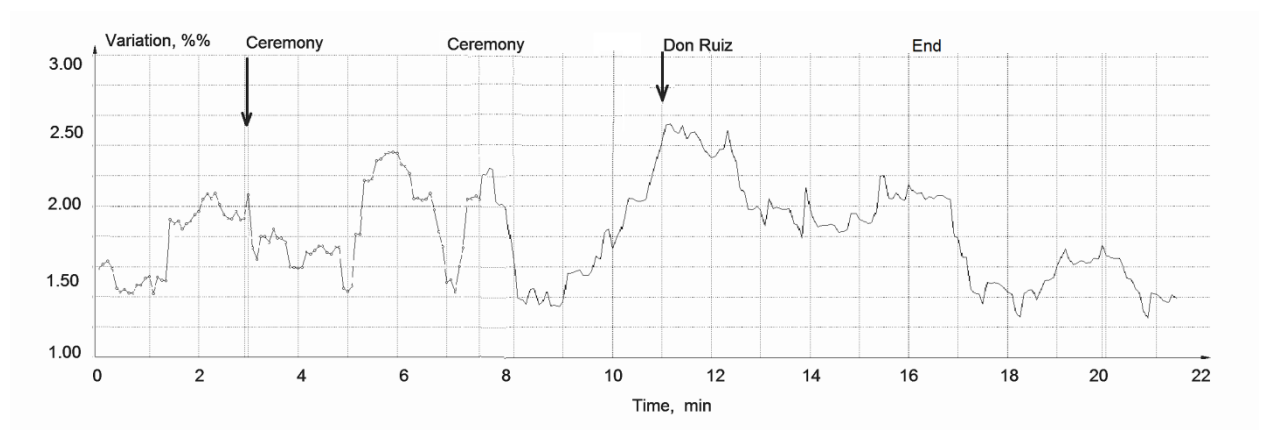


Fig.4. Time dynamics of Energy parameters measured during meditation nearby Sun pyramid in the morning 21.12.2012.

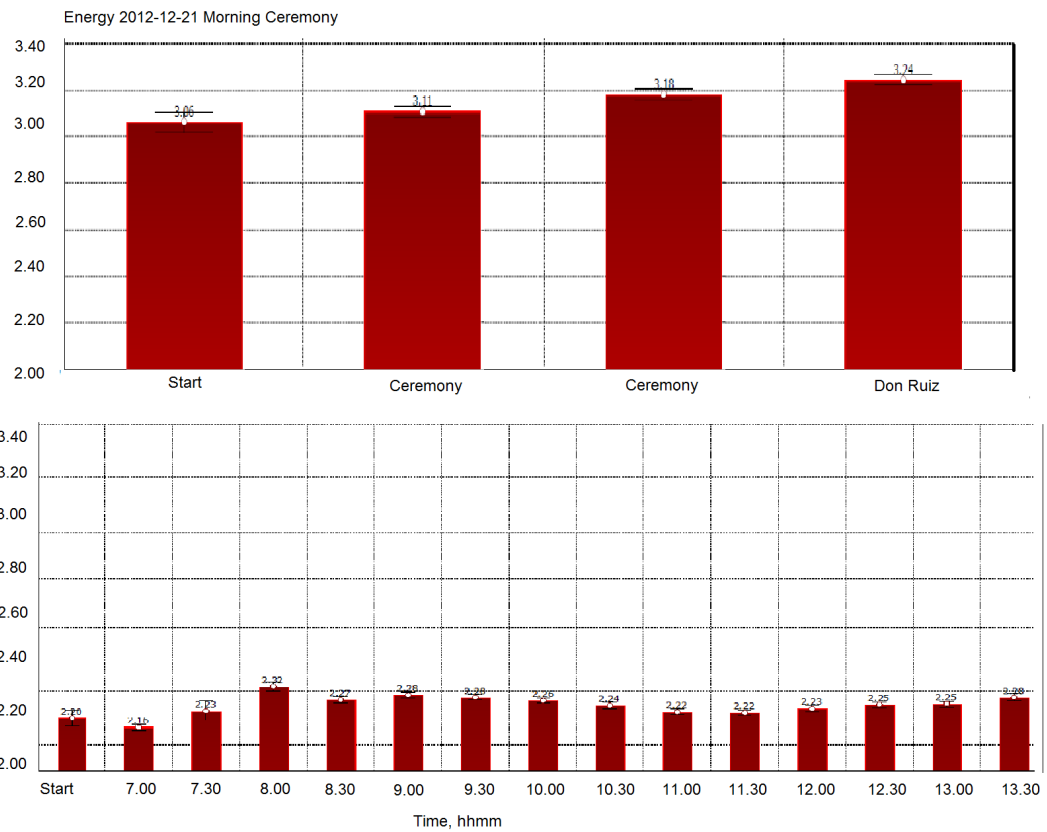
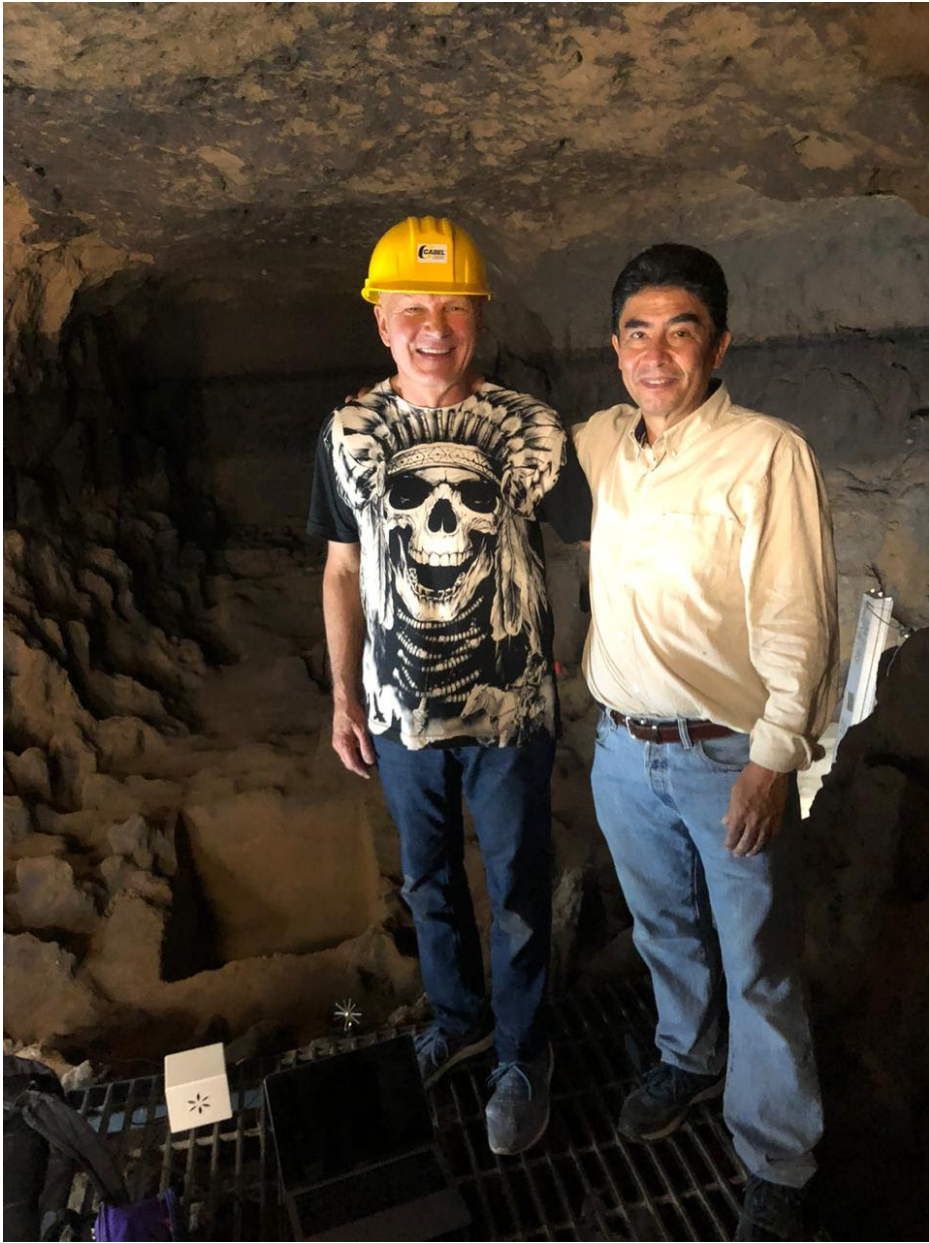


Fig.5. Energy parameters measured nearby Sun pyramid and in the hotel 21.12.2012.

## Conclusion

Sputnik measurements confirm high Energy values at the top of pyramids and low Energy in the tunnels. The higher values was recorded only at the top of Bosnian pyramids (see results in Korotkov K. Mysterious Mummies of Nazca. 2019).



Dr. Korotkov with Dr. Gómez in the Teotihuacan tunnel.



Bio-Well measurement.



Climbing out from the tunnel.



At the top of the Moon pyramid.